

## Advance's Minerva Service in South East England



Advance Minerva Women's Centres



Minerva Partner Centres

# I FEEL LIKE A WOMAN AT MINERVA, NOT AN OFFENDER

Advance's Minerva Service supports women involved in the criminal justice system to move on with their lives.

Our goal is to reduce re-offending amongst women by providing dedicated one-to-one and group support tailored to women's needs.

Our specialist Advocates work closely with probation, housing, health, children's services, and other professionals to get women the help and advice they need, when they need it, from one place.



advance



Probation  
Service



Kent, Sussex & Surrey

Advance are co-commissioned by MoJ, MOPAC and the NHS

Advance Registered Charity No. 1086873 | A Company Limited by Guarantee Registered offices in England: Advance Advocacy and Non-violence Community Education, c/o, Knox Cropper LLP, 65-68, Leadenhall Street, London, EC3A 2AD | Reg. No. 040646600



## Advance's Minerva Community Women's Services in Kent

For more information about our services please call:

**020 3096 6481**

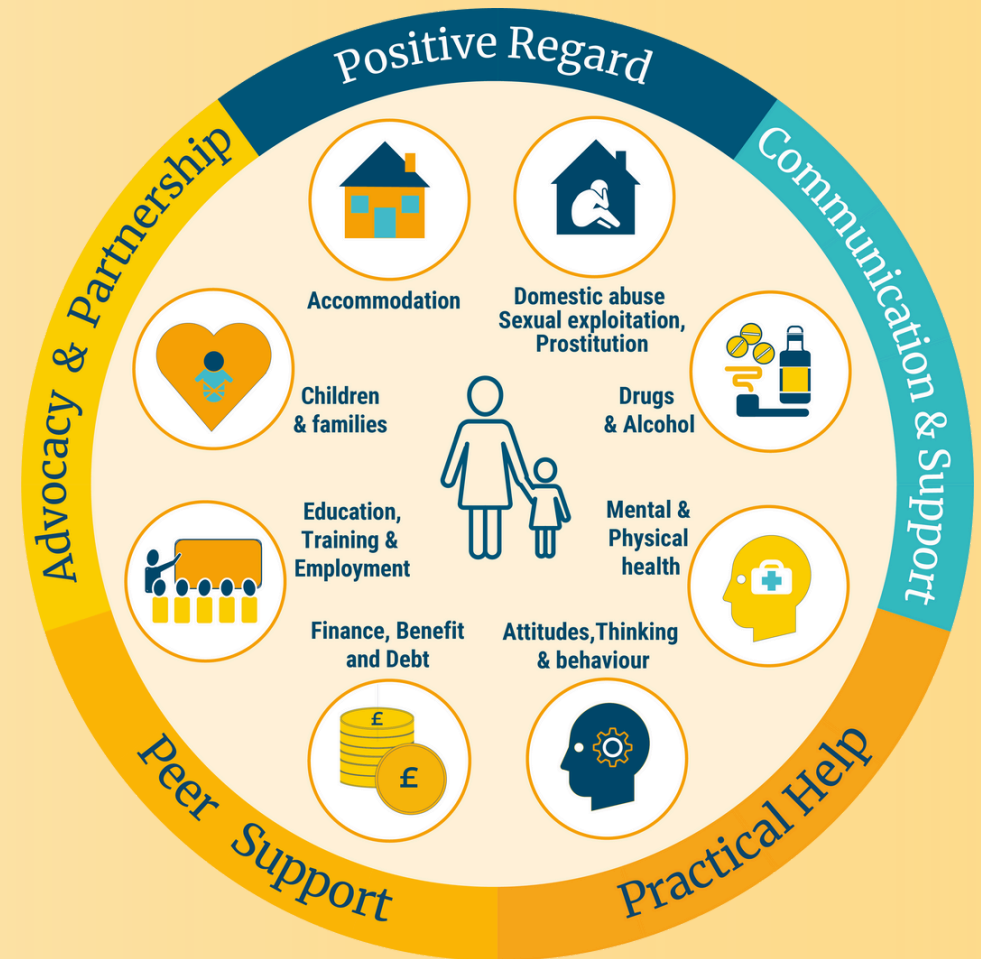
**Minerva Kent Service:**

[minerva\\_kent@advancecharity.org.uk](mailto:minerva_kent@advancecharity.org.uk)

[www.advancecharity.org.uk](http://www.advancecharity.org.uk)

## Advance's Minerva Service offers:

- Targeted support and advocacy for women to address practical and emotional needs, including outreach services.
- Intensive one-to-one support across all women's rehabilitative needs.
- Safe local hubs pan-regional and Women's centres.
- Access to tailored groups and workshops delivered by specialist providers e.g. finance and benefits, emotional wellbeing.
- Prison in-reach and Through-the-Gate Support for women in custody within three months prior to their release.



Referrals can be made by Probation Practitioners via **Refer & Monitor only.**

Enquiries from all other professionals can be sent to:

Kent: [minerva\\_kent@advancecharity.org.uk](mailto:minerva_kent@advancecharity.org.uk)  
Essex/Hertfordshire: [minerva\\_essexherts@advancecharity.org.uk](mailto:minerva_essexherts@advancecharity.org.uk)  
Thames Valley: [minerva\\_thamesvalley@advancecharity.org.uk](mailto:minerva_thamesvalley@advancecharity.org.uk)  
Bedfordshire: [minerva\\_bedfordshire@advancecharity.org.uk](mailto:minerva_bedfordshire@advancecharity.org.uk)  
Hertfordshire: [minerva\\_hampshire@advancecharity.org.uk](mailto:minerva_hampshire@advancecharity.org.uk)  
London: [minervaWA@advancecharity.org.uk](mailto:minervaWA@advancecharity.org.uk)



**1000s**  
of women  
supported

We provide holistic  
support around  
each woman's  
personal needs

**94%**  
of women reported  
improved health  
and well-being